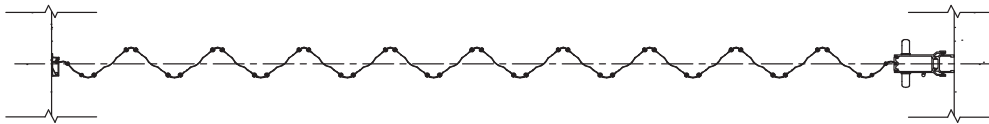
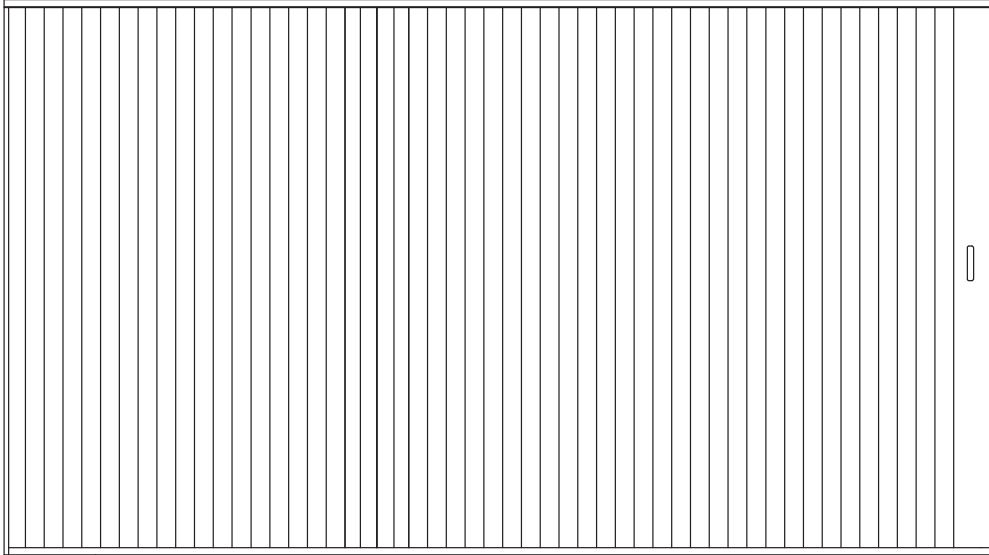


SIDE FOLDING ACCORDION UNITS

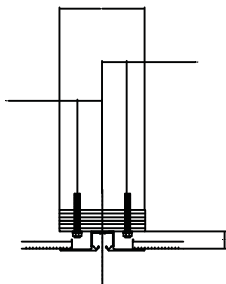
ANC-30 Accordion Door

STC-30



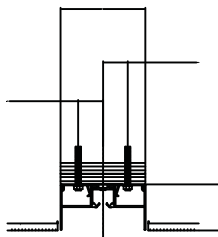
TRANSFORM SPACE, HEAD DETAILS - STRAIGHT DOOR - MANUAL OPERATION

UNDER 14' IN HEIGHT



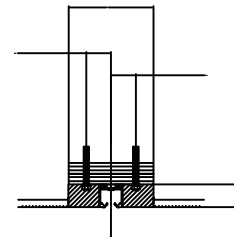
STANDARD TRACK
(RT-RECESSED)

UNDER 14' IN HEIGHT



TRACK W/PVC SOFFIT
(ST-SURFACE)

UNDER 14' IN HEIGHT



TRACK W/WOOD TRIM
(ST-SURFACE)

ANC-30 Accordion Door

GUIDE CONSTRUCTION OPTIONS

DOOR PROFILE WIDTH

Manual Doors

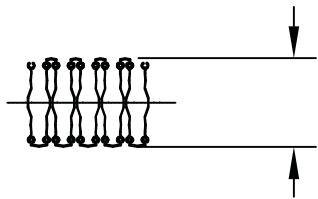
Below 12' high:

- ▶ Stacked width: 11.56"
- ▶ Extended width: 10.25" to 10.875"

Motorized and Manual Doors

Above 12' high or 250 sq ft:

- ▶ Stacked width: 13.56"
- ▶ Extended width: 12.25" to 12.875"



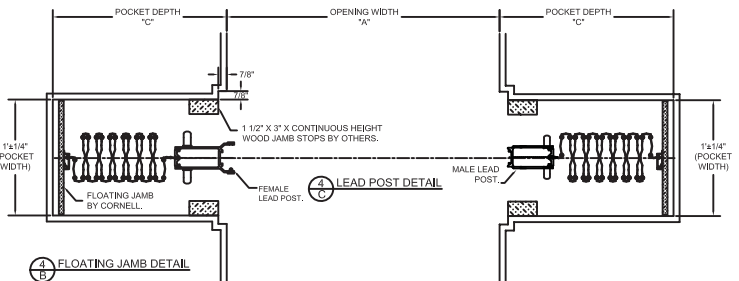
SINGLE SLIDE WITH POCKET - EXAMPLE

Total width 10'

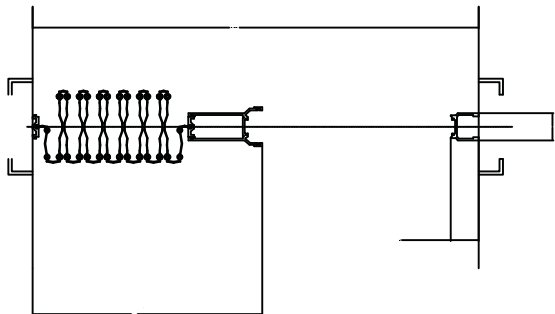
Opening width 7'1"

Pocket depth 1'5½"

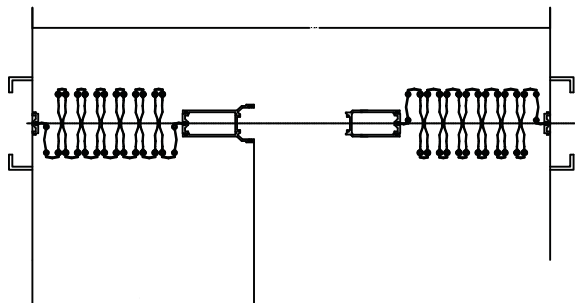
*Shown without pocket door. Adding pocket door will increase pocket depth.



PLAN VIEW: SINGLE SLIDE, FIXED JAMB



PLAN VIEW: BI-PARTING, FIXED JAMB



The dimensions featured on this sheet are provided as a guide. Please contact the factory for exact dimensions for your closure.