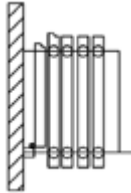
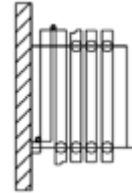


ANC-610MD CAD Drawings

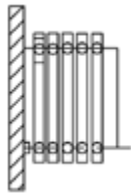
Single Panel - Used for openings through 6 panels.



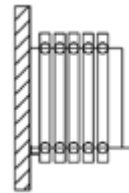
Bi-Fold Panels - used for openings with 7 through 20 panels.



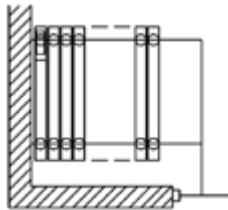
Expandable Panel - used to close to wall.



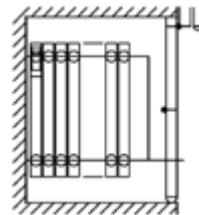
L-Jamb- used to close to wall.



Expandable Panel - used for offset openings.



Expandable Panel - Used to close to pocket doors.



Communicating Panel used for openings through 13 panels for egress.

