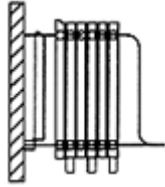
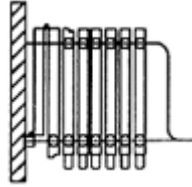


Model 410PP

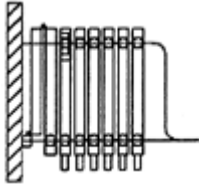
Single Panel used for opening through 8 panels.



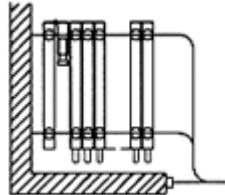
Bi-Fold Panels used for opening with 9 through 20 panels.



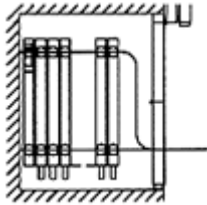
Single or Bi-Fold Panels with Expandable Panel, used for opening through 20 panels



Expandable Fly-Panel, used for offset openings or remote stock.



Expandable Panel, used to close to pocket doors.



Communicating Panel used for openings through 19 panels for egress.

